

B&C #Set In

WU01W



Contemporary all purpose Crew neck available in 35 amazing colours made of 80/20 soft sweat fabric providing an ideal printing surface. Your #bestallpurposesetin #idealprintability

35 COLOURS

NO LABEL
EASY BRANDING SOLUTION



SWEATSHIRT - FRENCH TERRY

80% pre-shrunk ring-spun Cotton - 20% Polyester
280 g/m² | XS - S - M - L - XL - 2XL - 3XL - 4XL* - 5XL*
5 pcs/pack & 30 pcs/carton

* Only available in Black Pure, Navy Blue, Heather Grey, Asphalt, Royal, Red, White

Want the same style but in women?
Try the B&C #Set In /women



DUO
CONCEPT



* ALSO AVAILABLE IN 4XL - 5XL

HEATHER MID GREY, HEATHER NAVY, HEATHER ASPHALT, HEATHER RED, HEATHER DARK GREEN, HEATHER ROYAL BLUE & HEATHER PURPLE: 60% PRE-SHRUNK RING-SPUN COTTON - 40% POLYESTER / HEATHER GREY: 92% PRE-SHRUNK RING-SPUN COTTON - 8% VISCOSE

#Style

- Essential classic Crewneck sweatshirt, clean and minimalistic for any occasion #allpurposes
- Comfortable fit and body length for perfect look #uptodate
- Side seams ensure the best fit and a masculine silhouette #bestshape
- Identical colours (35) for men and women #perfectduo
- 9 sizes - XS to 5XL #fitsall
- Easy branding solution - B&C No Label Solution #customiseme

- Inside Single Jersey halfmoon in back to allow easy branding personalisation #makemylifeeasy
- Minimalist detailing suitable for many uses and end user requirements #easystyling

#Quality / Handfeel

- Made of 80% ring-spun Cotton / 20% Polyester #skincomfort
- #Oeko-Tex100
- Unbrushed fabric for a perfect look #myperfectlook
- Unbrushed fabric combined with a soft outside that allow great comfort #greatcomfort

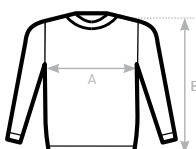
- Resistant fabric and soft handfeel #ring spun
- 280 gsm #whatevertheweather

#Printability / Decoration

- Smooth and even surface for ideal printing results #details
- Tested and approved for all standard printing techniques applicable on Cotton/Polyester #beinspired
- B&C No Label Solution for perfect rebranding #customiseme
- Folded in box to ease the decoration process #makemylifeeasy

Labels

- Easy branding solution - B&C No Label Solution
- Straightforward size identification through size chip on the neck
- In sideseam: Soft satin label with all mandatory information following EU regulation



B&C #SET IN WU01W	XS	S	M	L	XL	2XL	3XL	4XL	5XL
A HALF CHEST	50	53	56,5	60	63,5	67	71	75	79
B BODY LENGTH	69	71	73	75	77	79	80	81	82

