

CLIFTON

MK242WV [White] MK242CV [Colours]

MUKUA



100 White



502 Royal Blue



202 Heather Grey



301 Orange



200 Black



400 Red



500 Navy

Long-sleeve unisex polo

210g/m²

Piqué fabric

35% RingSpun Cotton 65% Polyester

S — 5XL

Placket with 3 buttons

Shoulder-to-shoulder reinforced neck tape to avoid deformation

1x1 rib knit collar

Cuff with elastane for greater elasticity and to avoid deformation

Sideseamed with side vents

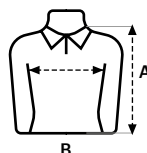
Regular fit

Previous name: CLUB

SIZES

	S	M	L	XL	2XL	3XL	4XL	5XL
A	69	71	73	75	77	79	81	83
B	50	53	56	59	63	67	71	75

Measurements in cm. Tolerance +/- 5%



202 Heather Grey 85% Cotton - 15% Viscose

Removable label

50 pieces per box

5 pieces per bag