

KARIBAN

1/2

REFERENCE : K696

NAME : PARKA KIDS

SIZES : 4/6_8/10_10/12_12/14

COMPOSITION :

Shell : Polyester oxford 250 With PVC coating
100%polyester
Lining 2 : Lining 210T For padded lining 100%polyester
Lining : Polar fleece 300 For inner collar 100%polyester
Wad 1 : Polyfil 165 For padded inner body 100%polyester
Wad 2 : Polyfil 120 For padded inner sleeves
100%polyester

WEIGHT :

Shell : 250 gsm
Lining 2 : 60 gsm
Lining : 300 gsm
Wad 1 : 165 gsm
Wad 2 : 120 gsm

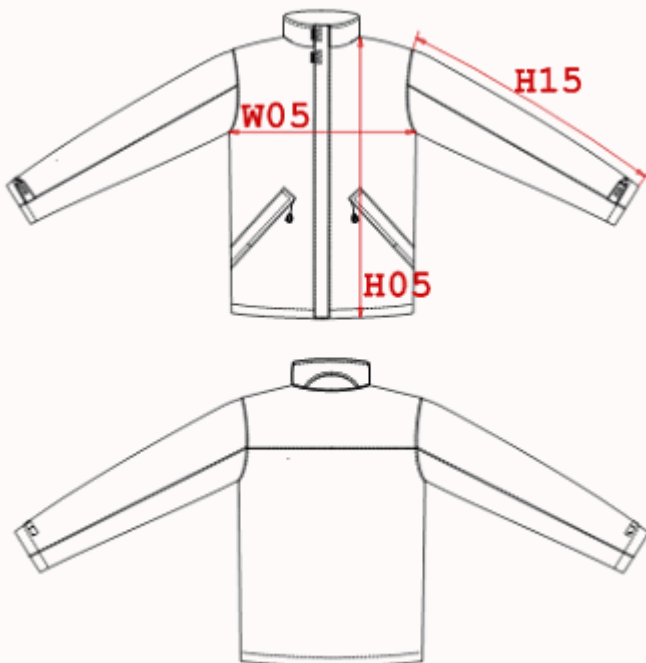
FABRIC CONSTRUCTION AND FINISHING :

with PVC coating Polyester oxford

COLORS	PANTONE SERIGRAPHIE
Navy	296C
Black	Black
Red	186C

DESCRIPTION

Français : Parka avec doublure matelassée
English : Padded parka jacket
Nederlands : Gepolsterte parkajacke mit wasserdichte nahter
Deutsch : Parka mit gestepptem futter
Español : Parka de forro acolchado
Italiano : Parka per uomo
Português : Parka de criança



MEASUREMENT

Description	4/6	8/10	10/12	12/14			
H05 Hauteur totale / Total height	61,60	70,80	73,15	77,50			
W05 1/2 largeur poitrine / 1/2 chest width	44,80	48	51	54			
H15 Longueur manche / Sleeve length	43	51	55	57,50			

PACKING

Box	10 pcs / box 4/6 => L:45cm W:30cm H:34cm GW:8kg NW:7kg 8/10=> L:48cm W:35cm H:34cm GW:9kg NW:8kg 10/12 => L:50cm W:37cm H:34cm GW:10kg NW:9kg 12/14 => L:55cm W:39cm H:cm34 GW:11.6kg NW:10.3kg
-----	---

CARE LABEL

