

# KARIBAN

REFERENCE : K232

NAME : FLAG

SIZES : S\_M\_L\_XL\_XXL\_3XL

**COMPOSITION :**

Main fabric : Polycotton pique 65/35 - 220 65%polyester / 35%cotton

Main fabric : Polycotton pique 65/35 - 220 For contrasted yokes 65%polyester / 35%cotton

**WEIGHT :**

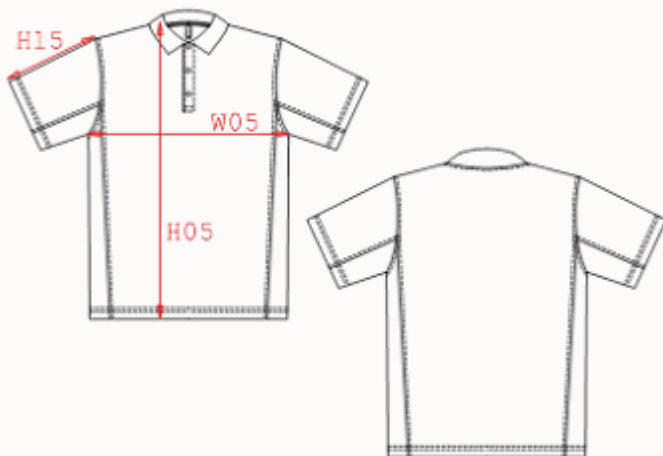
Main fabric : 220 gsm

Main fabric : 220 gsm

COLORS	PANTONE SERIGRAPHIE
White / Red	White / 186C
Navy / White	2965C / White
White / Royal blue	White / 287C
Red / Black	186C / Black
Black / Lime	Black / 374C
Red / Yellow	186C / 123C
Navy / Sky blue	2965C / 277C
Black / Slate grey	Black / 425C
Black / Orange	Black / 1505C
Navy / Pink	2965C / 1905C
Light grey / Red	422C / 186C
Dark grey / Orange	432C / 1505C

**DESCRIPTION**

- Français :** Polo bicolore  
**English :** Bi-colour short sleeve polo shirt  
**Nederlands :** Tweekleurige polo  
**Deutsch :** Zweifarbigen polohemd  
**Español :** Polo piqué bicolor  
**Italiano :** Polo bicolore  
**Português :** Polo pique bicolor



**MEASUREMENT**

Description	S	M	L	XL	XXL	3XL
<b>H05</b> Hauteur totale/total height	68,50	70,50	72,50	74,50	76,50	79,25
<b>W05</b> 1/2 largeur poitrine/1/2 chest width	49	52	55	58	61	65
<b>H15</b> Longueur dessus de manche / sleeve length	21	22	23	24	25	26,25

**PACKING**

Box	25 pcs / box S-M => L:54cm W:37cm H:17cm GW:9.40kg NW:7.60kg L-XL => L:58cm W:38cm H:17cm GW:10.40kg NW:8.60kg XXL-3XL => L:60cm W:40cm H:18cm GW:11.20kg NW:9.40kg
-----	---

**CARE LABEL**

