





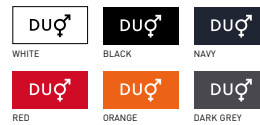
# B&C ID.601 /WOMEN > JW 161

## LIGHT WEIGHT JACKET / WITH LINING



### Modern lined windbreaker

-  100% 210T polyester taffeta with acrylic coating (AC)
-  Body lining: 100% polyester tricot  
Sleeves lining: 100% polyester taffeta
-  XS - S - M - L - XL - 2XL
-  5 pcs/pack & 30 pcs/carton



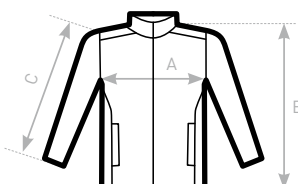
-  Windproof
-  Thermo-insulated
-  Showerproof
-  Feminine cut
-  Water-repellent

- Ergonomic hood concealed in collar with closing tabs
- Self fabric lining inside the collar
- Forward seams on shoulders for better protection
- Front zip opening with zip pull
- Adjustable bottom hem with drawcord
- 2 front pockets with overlap



**DU**  
**CONCEPT**

with B&C ID.601



#### SIZES [CM]

B&C ID. 601 /WOMEN JW 161	XS	S	M	L	XL	2XL
A HALF CHEST	46	49	52	55	58	61
B BODY LENGTH AT CB	63	65	67	69	71	73
C SLEEVE LENGTH	65	66,5	67,5	69	70	71,5

B&C  
COLLECTION  
**OUTER  
WEAR  
/UNIT**