

# B&C TROOPER /WOMEN - JW 964

## LIGHT WEIGHT JACKET / WITH LINING



Trendy light weight bomber jacket with ergonomic concealed hood

**POLYESTER 210T TAFFETA**

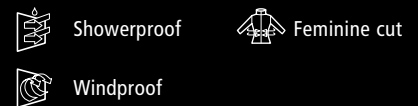
Outer layer: 100% polyester 210T taffeta

Body lining: 100% polyester mesh

Sleeve lining: 100% polyester taffeta

XS - S - M - L - XL - 2XL

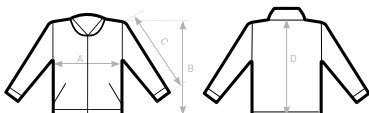
5 pcs/pack & 10 pcs/carton



- Fashionable contrasted diamond mesh lining, improves breathability and comfort
- Self fabric inner collar
- Contemporary cotton feel heavy rib on cuffs and bottom hem
- Forward shoulder seams for better comfort and water protection
- 2 zipped hand pockets
- 1 inner wallet pocket with closing tabs
- Zip at lower back gives easy full decoration access (front - back - sleeves)
- Fabric tested for the following decoration techniques - screen printing, heat transfer, sublimation (for white only), and embroidery



DUO  
CONCEPT  
with B&C Trooper /men



### SIZES [CM]

B&C TROOPER /WOMEN JW 964	XS	S	M	L	XL	2XL	3XL
A HALF CHEST	48	51	54	57	60	63	-
B BODY LENGTH FROM NECK POINT	60	62	64	66	68	70	-
C SLEEVE LENGTH	62	63,5	65	66,5	68	69,5	-
D CENTER BACK LENGTH	58,5	60,5	62,5	64,5	66,5	68,5	-

B&C  
COLLECTION  
**OUTER  
WEAR  
/UNIT**