

B&C ICEWALKER+ - FU 703

RAW FLEECE



B&C
COLLECTION

**OUTER
WEAR
/UNIT**

- Tone-on-tone full zip opening with zip pull
- 2 front pockets with zips
- Open hem with elasticated cord, 2 stoppers and easy-to-pull rings



BLACK*

NAVY*

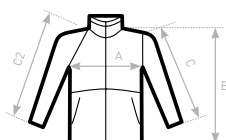
RED*

CHARCOAL

* COLOURS AVAILABLE IN XXXL

- 100% anti-pilling polyester fleece
- 300 g/m²
- XS - S - M - L - XL - XXL - XXXL*
- 5 pcs/pack & 15 pcs/carton

* ONLY AVAILABLE IN BLACK, NAVY AND RED



C2= RAGLAN SLEEVE

SIZES [CM]

B&C ICEWALKER+ FU 703

	XS	S	M	L	XL	XXL	XXXL
A HALF CHEST	50	53	56	59	62	65	68
B BODY LENGTH	68	69,5	71	72,5	74	75,5	77
C SLEEVE LENGTH	61,5	62,5	63,5	64,5	65,5	66,5	67,5

FAIR
WEAR
FOUNDATION